

## Genesis® G4 for 1/4" & 3/16" Avdelok®

### Fitting Instructions for Genesis® nG4/G4/G4HD 3/16 & 1/4 Avdelok® Nose Assemblies

**IMPORTANT**

**THE AIR SUPPLY MUST ALWAYS BE DISCONNECTED BEFORE ANY DISMANTLING IS ATTEMPTED**

The following parts are **NOT** required and must be removed from the basic tool before assembly of the Avdelok® nose equipment can commence. Part numbers can be identified by referring to the tool assembly diagram in the appropriate tool manual.

71210-02101 Jaw Spreader Housing

71230-02102 Vacuum Sleeve

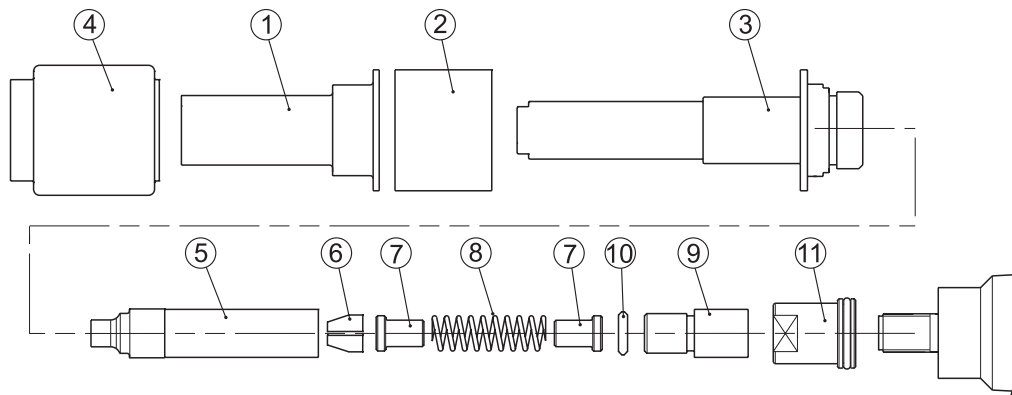
71230-02015 Locknut

71210-02104 Seal Housing

**Assembly of Avdelok® Nose Assembly** (Refer to Item Numbers ( ) listed in the table below)

1. Screw Locknut (11) fully onto the piston.
2. Screw Adaptor (9) fully onto the piston before tightening the locknut against it. Fit Friction Ring (10).
3. Assemble Chuck jaws (6), Spring Guide (7) and Spring (8) into the Chuck Collet (5). Lightly coat the Jaws and the internal bore of the Chuck Collet with Molybdenum grease.
4. Screw the Chuck Collet assembly onto the Adaptor (9) and tighten.
5. Assemble the Anvil (3) over the Chuck Collet and screw into the head Assembly.
6. Assemble the Buffer (2) and the Anvil Casing (1) over the Anvil and retain in place with the Rubber Shroud (4).

**Note:** For ease of fitting the Rubber Shroud, smear liquid soap on its internal surface.



**1/4 AVDELOK® NOSE ASSEMBLY 71230-05020**

ITEM	71230-05020 for 6.4 (1/4") Avdelok®	
1	71230-05012	Anvil Casing
2	71230-05014	Buffer
3	71230-05021	Anvil
4	71230-05013	Rubber Shroud
5	07200-02201	Chuck Collet
6	07220-02302	Chuck Jaws
7	07220-02104	Spring Guide
8	07220-02103	Spring
9	07610-00501	Chuck Collet Adapter
10	07610-02004	Friction Ring
11	71233-20200	Locknut

**3/16 AVDELOK® NOSE ASSEMBLY 71230-05010**

ITEM	71230-05010 for 4.8 (3/16") Avdelok®	
1	71230-05012	Anvil Casing
2	71230-05014	Buffer
3	71230-05011	Anvil
4	71230-05013	Rubber Shroud
5	07200-02101	Chuck Collet
6	07220-02102	Chuck Jaws
7	07220-02104	Spring Guide
8	07220-02103	Spring
9	07610-00501	Chuck Collet Adapter
10	07610-02004	Friction Ring
11	71233-20200	Locknut



Since 1922



Avdel® iForm™

Since 1 936

2010



Our Technology, Your Success

#### AUSTRALIA

##### Infastech (Australia) Pty Ltd.

891 Wellington Road  
Rowville  
Victoria 3178  
Tel: +61 3 9765 6400  
Fax: +61 3 9765 6445  
info@infastech.com.au

#### CANADA

##### Avdel Canada Limited

1030 Lorimar Drive  
Mississauga  
Ontario L5S 1R8  
Tel: +1 905 364 0664  
Fax: +1 905 364 0678  
infoAvdel-Canada@infastech.com

#### CHINA

##### Infastech (China) Ltd.

RM 1708, 17/F., Nanyang Plaza,  
57 Hung To Rd., Kwun Tong  
Hong Kong  
Tel: +852 2950 0631  
Fax: +852 2950 0022  
infochina@infastech.com

#### FRANCE

##### Avdel France S.A.S.

33 bis, rue des Ardennes  
BP4  
75921 Paris Cedex 19  
Tel: +33 (0) 1 4040 8000  
Fax: +33 (0) 1 4208 2450  
AvdelFrance@infastech.com

#### GERMANY

##### Avdel Deutschland GmbH

Klusriede 24  
30851 Langenhagen  
Tel: +49 (0) 511 7288 0  
Fax: +49 (0) 511 7288 133  
AvdelDeutschland@infastech.com

#### INDIA

##### Infastech Fastening Technologies

##### India Private Limited

Plot No OZ-14, Hi Tech SEZ,  
SIPCOT Industrial Growth Center,  
Oragadam, Sriperumbudur Taluk,  
Kanchipuram District,  
602105 Tamilnadu  
Tel: +91 44 4711 8001  
Fax: +91 44 4711 8009  
info-in@infastech.com

#### ITALY

##### Avdel Italia S.r.l.

Viale Lombardia 51/53  
20047 Brugherio (MI)  
Tel: +39 039 289911  
Fax: +39 039 2873079  
vendite@infastech.com

#### JAPAN

##### Infastech Kabushiki Kaisha

Center Minami SKY,  
3-1 Chigasaki-Chuo, Tsuzuki-ku,  
Yokohama-city,  
Kanagawa Prefecture  
Japan 224-0032  
Tel: +81 45 947 1200  
Fax: +81 45 947 1205  
info@infastech.co.jp

#### MALAYSIA

##### Infastech (Malaysia) Sdn Bhd

Lot 63, Persiaran Bunga Tanjung 1,  
Senawang Industrial Park  
70400 Seremban  
Negeri Sembilan  
Tel: +606 676 7168  
Fax: +606 676 7101  
info-my@infastech.com

#### SINGAPORE

##### Infastech (Singapore) Pte Ltd.

31 Kaki Bukit Road 3  
#05-03/06 Techlink  
Singapore, 417818  
Tel: +65 6372 5653  
Fax: +65 6744 5643  
info-sg@infastech.com

#### SOUTH KOREA

##### Infastech (Korea) Ltd.

212-4, Suyang-Ri,  
Silchon-Eup, Kwangju-City,  
Kyunggi-Do, Korea, 464-874  
Tel: +82 31 798 6340  
Fax: +82 31 798 6342  
info@infastech.co.kr

#### SPAIN

##### Avdel Spain S.A.

C/ Puerto de la Morcuera, 14  
Poligono Industrial Prado Overa  
Ctra. de Toledo, km 7,8  
28919 Leganés (Madrid)  
Tel: +34 91 3416767  
Fax: +34 91 3416740  
ventas@infastech.com

#### TAIWAN

##### Infastech/Tri-Star Limited

No 269-7, Baodong Rd,  
Guanmiao Township,  
71841 Tainan County,  
Taiwan, R.O.C  
Tel: +886 6 596 5798 (ext 201)  
Fax: +886 6 596 5758  
info-tw@infastech.com

#### UNITED KINGDOM

##### Avdel UK Limited

Pacific House  
2 Swiftfields  
Watchmead Industrial Estate  
Welwyn Garden City  
Hertfordshire AL7 1LY  
Tel: +44 (0) 1707 292000  
Fax: +44 (0) 1707 292199  
enquiries@infastech.com

#### USA

##### Avdel USA LLC

614 NC Highway 200 South  
Stanfield, North Carolina 28163  
Tel: +1 704 888 7100  
Fax: +1 704 888 0258  
infoAvdel-USA@infastech.com

Data Sheet No.	Issue	Change Note No.
07900-00795	B	07/288
	B2	11/018

[www.avdel-global.com](http://www.avdel-global.com)  
[www.infastech.com](http://www.infastech.com)

Autosert® (equipment), Avbolt®, Avdel®, Avdelmate®, Avdel TX2000®, Avdelok®, Avex®, Avibulb®, Avinox®, Avinut™, Avlug®, Avmatic®, Avplas®, Avseal®, Avsert®, Avtainer®, Avtronic®, Briv®, Bulbex®, Chobert®, Eurosert®, Fastriv®, Finsert®, Genesis®, Grovit®, Hemlok®, Hexsert®, Holding your world together®, Hydra®, Interlock®, Klamp-Tite®, KlampTite KTR®, Kvex®, Maxlok®, Monobolt®, Monobulb®, Neobolt®, Nutsert®, Nutsert SQ®, Portariv®, Rivmatic®, Rivscrew®, Speed Fastening®, Squaresert®, Stavex®, Supersert®, Thin Sheet Nutsert®, Titan®, T-Lok®, TLR®, TSN®, TX2000®, Versa-Nut®, Viking® and Viking 360® are trademarks of Avdel UK Limited. Infastech™ and Our Technology, Your Success™ are trademarks of Infastech Intellectual Properties Pte Ltd. The names and logos of other companies mentioned herein may be trademarks of their respective owners. This document is for informational purposes only. Infastech makes no warranties, expressed or implied, in this document. Data shown is subject to change without prior notice as a result of continuous product development and improvement policy. Your local Avdel representative is at your disposal should you need to confirm latest information.