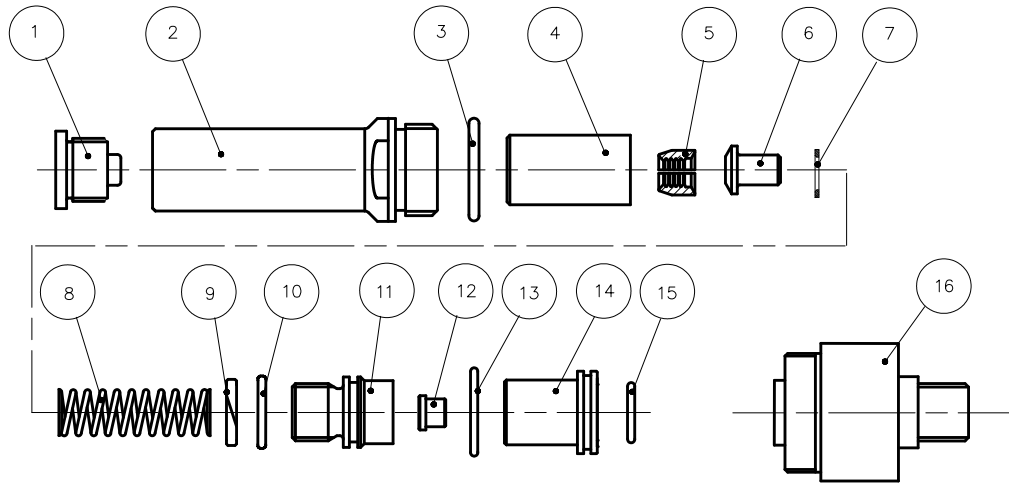


## MAXLOK 'JAW RELEASE' EQUIPMENT



71234-03500 1/4 EQUIPMENT COMPRISING: -			71234-03600 3/16 EQUIPMENT COMPRISING: -		
1	71234-03501	1/4 ANVIL NOSE TIP	71234-03601	3/16 ANVIL NOSE TIP	
2	71234-03502	NOSE CASING	71234-03602	3/16 NOSE CASING	
3	07003-00067	O-RING	07003-00067	O-RING	
4	71234-03503	JAW HOUSING	71234-03503	JAW HOUSING	
5	71234-03504	1/4 JAW SET (3)	71234-03603	3/16 JAW SET (3)	
6	71234-03510	JAW SPREADER	71234-03604	JAW SPREADER	
7	71234-03509	BUFFER	07498-03003	BUFFER	
8	71234-03508	SPRING	07500-00418	SPRING	
9	07340-00327	LOCKING RING	07340-00327	LOCKING RING	
10	07003-00277	O-RING	---	---	
11	71234-03505	JAW SPREADER HOUSING	---	---	
12	71234-03507	GUIDE BUSH	---	---	
X	13	07003-00204	O-RING	---	---
X	14	71234-03506	LOCK NUT	---	---
X	15	07003-00419	O-RING	---	---
	16	71234-03511	END CAP ASSEMBLY	---	---

(X) ONLY REQUIRED ON TOOLS FITTED WITH VACUUM CUT-OFF TRIGGER 71213-02008

To prepare base tool to accept 1/4 Maxlok Jaw Release equipment

Refer to assembly drawing in the nG4 tool manual (07900-00931)

Remove the following parts:

- 71210-02101 Jaw Spreader Housing
- 71230-02102 Vacuum Sleeve
- 71230-02015 Locknut (*Only tools fitted with 71213-02008 Trigger*)
- 71210-02104 Seal Housing (*Only tools fitted with 71213-02008 Trigger*)
- 71231-02001 End Cap Assembly

To assemble 1/4 Maxlok equipment refer to above list of parts (71234-03500):


- A. Assemble items 13,14 & 15 and screw fully (hand tight) onto Head Piston (*Only tools fitted with 71213-02008 trigger*).
- B. Fit Guide Bush (12) into front of Head Piston.
- C. Screw Jaw Spreader Housing (11) fully onto Head piston before tightening locknut (item 14 or 71230-02015) against it.
- D. Fit End Cap Assembly (16)
- E. Lightly coat Jaws (5) with Moly Lithium Grease
- F. Insert jaws (5) into Jaw Housing (4)
- G. Locate Buffer (7) on Jaw Spreader (6)
- H. Locate Spring (8) onto Jaw Spreader (6)
- J. Fit Locking Ring (9) and O-ring (10) onto Jaw spreader Housing (11)
- I. Holding tool pointing downwards, screw the assembled Jaw housing onto the Jaw Spreader Housing and tighten.
- J. Screw Nose Tip Anvil (1) into Nose Casing (2) and tighten
- K. Place Nose Casing and o-ring (3) over assembled equipment and tighten.

To assemble 3/16 Maxlok equipment refer to above list of parts (71234-03600):

3/16 Maxlok equipment is fitted direct to the base nG4 tool i.e. no tool preparation required.

Follow instructions E-K

Note: The fastener grip range (3/16 & 1/4 Maxlok) is reduced by 2.5mm when 'Jaw Release' equipment is fitted.

	ISSUE	B					
	C.N.	12/210					
DESCRIPTION		MAXLOK JAW RELEASE EQUIPMENT					
	Avdel UK Limited Pacific House, 2 Swiftfields, Watchmead Industrial Estate, Welwyn Garden City, Hertfordshire, AL7 1LY Registered in England: No. 315076			SHEET 1 of 1			
	DRAWING NUMBER	07900-00932					