



## Infalok<sup>®</sup> Nose Assembly Instructions AV<sup>™</sup> 10, AV<sup>™</sup> 15, AV<sup>™</sup> 30 and AV<sup>™</sup> 50

### Safety Rules

This technical datasheet must be read with particular attention to the safety rules and operating instructions listed in the AV<sup>™</sup> 10, AV<sup>™</sup> 15, AV<sup>™</sup> 30 and AV<sup>™</sup> 50 Instruction Manuals, by any person fitting or operating the nose assemblies and hand tools.

### Intent of Use

The Lockbolt nose assemblies in combination with the AV<sup>™</sup> 10, AV<sup>™</sup> 15, AV<sup>™</sup> 30 and AV<sup>™</sup> 50 tools are designed for placing Avdel<sup>®</sup> Lockbolt structural fasteners only. The correct placing tool and nose assembly must be selected for each fastener size as shown in the table below.

**IMPORTANT**  
The tools and nose assemblies must be used in accordance with the safety rules and fitting instructions contained within this datasheet and the tool instruction manual. The placing of fasteners not included in this datasheet could have a detrimental impact on the working life of the tool and nose assemblies and could invalidate the warranty.

The table below provides a full list of part numbers, nose assemblies and base tools required to place each Lockbolt size. This table should be used to select and order the correct placing equipment.

For the fitting and servicing instructions for each nose assembly refer to the page number provided in the table below.

### Nose Equipment Part Numbers

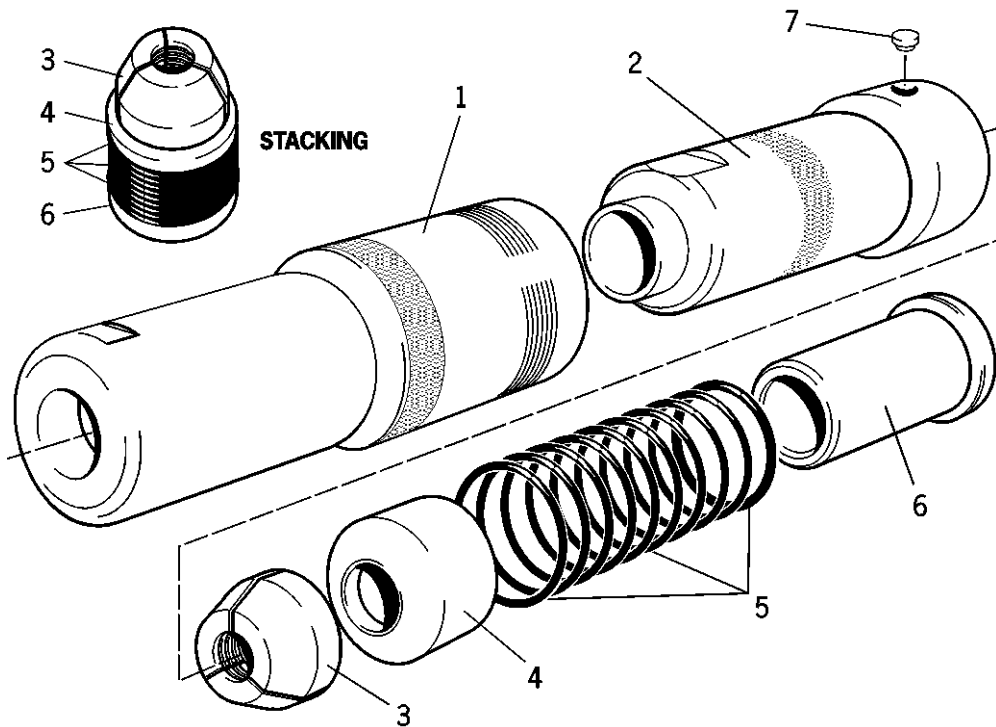
LOCKBOLT SIZE	NOSE ASSEMBLY		BASE TOOL	
	PART N <sup>o</sup>	PAGE	MODEL	PART N <sup>o</sup>
3/8" Avdelok <sup>®</sup>	73411-03100	2	AVLOCK T10	-
	73430-03100	2	AV <sup>™</sup> 10	73430-02000
1/2" Infalok <sup>®</sup>	73412-03100	10	AV <sup>™</sup> 30	73434-02000
			AVLOCK T30 & T40	-
	73432-03200	4	AV <sup>™</sup> 15	73432-02000
	73433-03200	6	AV <sup>™</sup> 15	73432-02000
5/8" Infalok <sup>®</sup>	73412-04300	8	HUCK 2620	
	73412-03200	10	AV <sup>™</sup> 30	73434-02000
			AVLOCK T30 & T40	-
73412-04400	13	HUCK 2620 & 2628		
3/4" Infalok <sup>®</sup>	73412-03300	10	AV <sup>™</sup> 30	73434-02000
			AVLOCK T30 & T40	-
	73412-04500	15	HUCK 2628	
7/8" Infalok <sup>®</sup>	73410-03200	17	AV <sup>™</sup> 50	73435-02000
			AVLOCK T51	-
	73455-03100	20	HUCK 506	
1" Infalok <sup>®</sup>	73410-03100	17	AV <sup>™</sup> 50	73435-02000
			AVLOCK T51	-
	73454-03100	22	HUCK 507	
1 1/8" Infalok <sup>®</sup>	73410-03300	17	AV <sup>™</sup> 50	73435-02000
			AVLOCK T51	-

# 3/8" Avdelok® Nose Assembly 73411-03100 and 73430-03100 for Avlock T10 and Avdel® AV™ 10

**IMPORTANT**  
**Be sure the power supply is turned off before fitting or removing the nose assembly.**

3/8" AVDELOK NOSE ASSEMBLY part No. 73411-03100			
ITEM	DESCRIPTION	PART No	QTY
1	ANVIL	73411-03101	1
2	COLLET	73411-03102	1
3	JAW SET	73411-03103	1
4	FOLLOWER	73411-03104	1
5	'O' RING	73411-03105	10
6	SLEEVE	73411-03106	1
7	COLLET LOCK	73411-03107	1

3/8" AVDELOK NOSE ASSEMBLY part No. 73430-03100			
ITEM	DESCRIPTION	PART No	QTY
1	ANVIL	73430-03101	1
2	COLLET	73430-03102	1
3	JAW SET	73430-03103	1
4	FOLLOWER	73430-03104	1
5	'O' RING	07003-00426	10
6	SLEEVE	73430-03105	1
7	COLLET LOCK	73430-05004	1



## Fitting Instructions

Item numbers in **bold** refer to nose assembly components in the table and illustration above.

- Ensure the installation tool piston is in the fully forward position.
- Lightly coat Jaw Set **3** with Moly Lithium grease.
- On a flat work surface, assemble Sleeve **6**, 'O' Rings **5**, Follower **4** and Jaw Set **3** by stacking vertically in that order.
- Carefully lower Collet **2** over the assembled components, slide to the edge of the work surface and with a finger, push the assembled components fully inside the collet.

# 3/8" Avdelok<sup>®</sup> Nose Assembly 73411-03100 and 73430-03100 for Avlock T10 and Avdel<sup>®</sup> AV<sup>™</sup> 10

---

## Fitting Instructions

---

Item numbers in **bold** refer to nose assembly components in the table and illustration on page 2.

### Avlock T10 Tool:

- Holding the tool pointing down, screw the assembled collet fully onto the piston rod until it is flush with end of the collet adaptor.
- Insert Collet Lock **7** into Collet **2**. Rotate Collet **2** on the piston rod in either direction until Collet Lock **7** slots into the nearest groove in the collet adaptor. The Collet Lock **7** should be flush with the exterior of Collet **2**.
- Slide Anvil **1** over the collet and screw into the anvil adaptor until it is firm.
- There is a locking 'O' Ring which will create a resistance to the final few turns of the nose casing. It is imperative that the nose casing be hand tightened up against the rear locking face.

### Avdel AV<sup>™</sup> 10 Tool:

- The Collet **2** will be supplied pre-assembled with a ball type Collet Lock **7** and not with the loose brass pin type as illustrated above.
- Holding the tool pointing down, screw the assembled Collet **2** onto the piston rod until the Collet Lock **7** lines up with one of the four counter bores on the piston thread. Rotate Collet **2** on the piston rod in either direction until Collet Lock **7** slots into the nearest counter bore.
- The Collet Lock **7** should be flush with the exterior of Collet **2**.
- Slide Anvil **1** over Collet **2** and screw into the body of the placing tool until it is firm.
- There is a locking O-ring which will create a resistance to the final few turns of the Anvil. It is imperative that the Anvil be hand tightened up against the rear locking face.

## Servicing Instructions

---

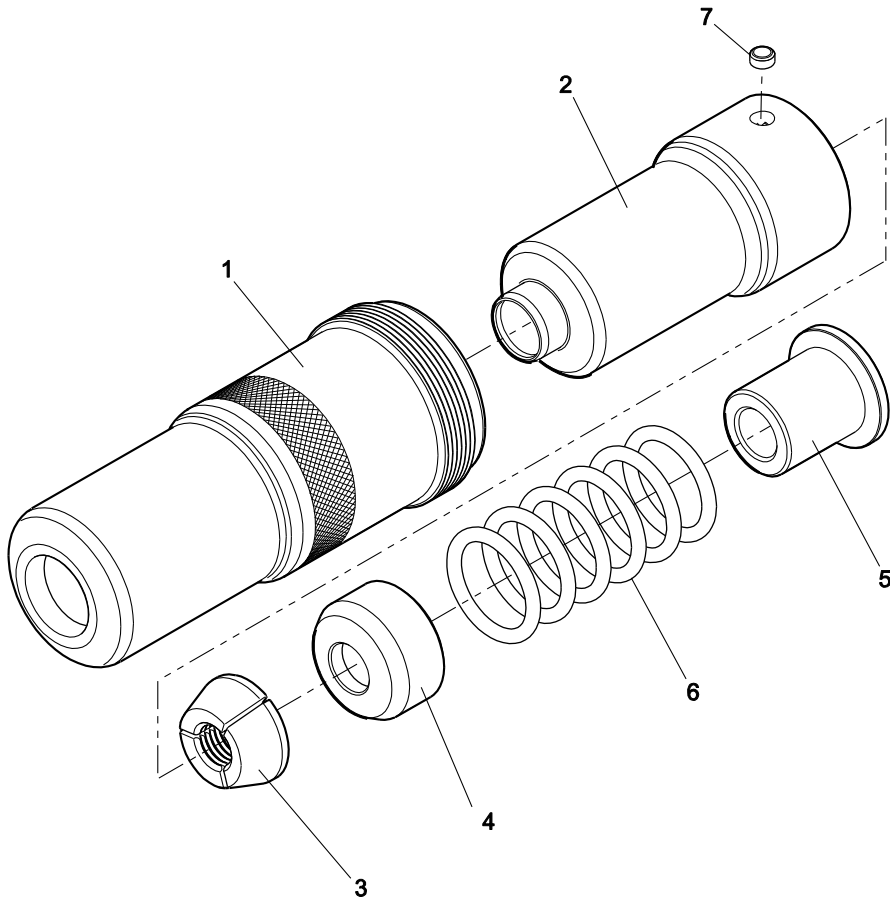
Nose assemblies should be serviced at weekly intervals. You should hold some stock of all internal components of the nose assembly as they will need regular replacement.

- Remove the nose assembly using the reverse procedure to the 'Fitting Instructions'.
- Any worn or damaged part should be replaced.
- Clean and check wear on Jaw Set **3**.
- Check that Follower **4**, Sleeve **6** and 'O' Rings **5** are not distorted.
- Assemble according to the 'Fitting Instructions'.

# 1/2" Infalok<sup>®</sup> Nose Assembly – 73432-03200 for Avdel<sup>®</sup> AV<sup>™</sup> 15

**IMPORTANT**  
Be sure the tool power supply is turned off before fitting or removing the nose assembly.

1/2" INFALOK NOSE ASSEMBLY part no 73432-03200			
ITEM	DESCRIPTION	PART No	QTY
1	ANVIL	73432-03201	1
2	COLLET	73432-03202	1
3	JAW SET	73432-03203	1
4	FOLLOWER	73412-03106	1
5	SLEEVE	73432-03204	1
6	'O' RING	73412-03607	6
7	COLLET LOCK	73430-05004	1



## Fitting Instructions

Item numbers in **bold** refer to nose assembly components in the tables and diagram above.

- Ensure the installation tool piston is in the fully forward position.
- Lightly coat Jaw Set **3** with Moly Lithium grease.

## 1/2" Infalok® Nose Assembly – 73432-03200 for Avdel® AV™ 15

---

### Fitting Instructions

---

- On a flat work surface, assemble the Sleeve **5**, 'O' Rings **6**, Follower **4** and Jaw Set **3** by stacking vertically in that order.
- Place the Collet **2** over the assembly stack, slide to the end of the work surface and with a finger, push the stack fully inside the Collet.
- The Collet **2** will be supplied pre-assembled with a ball type Collet Lock **7**.
- Holding tool pointing down, screw the assembled Collet **2** onto the piston rod until it is flush with the rear face of the collet adaptor.
- Rotate the Collet **2** on the collet adapter in either direction until the Collet Lock **7** ball slots into the nearest indent on the collet adapter. The Collet Lock **7** should be flush with the exterior of the Collet **2**.
- Slide the Anvil **1** over the Collet **2** and screw into the body of the tool until it is firm.
- There is a locking 'O' ring which will create a resistance to the final few turns of the Anvil **1**. It is imperative that the anvil be hand tightened up against the rear locking face.

### Servicing Instructions

---

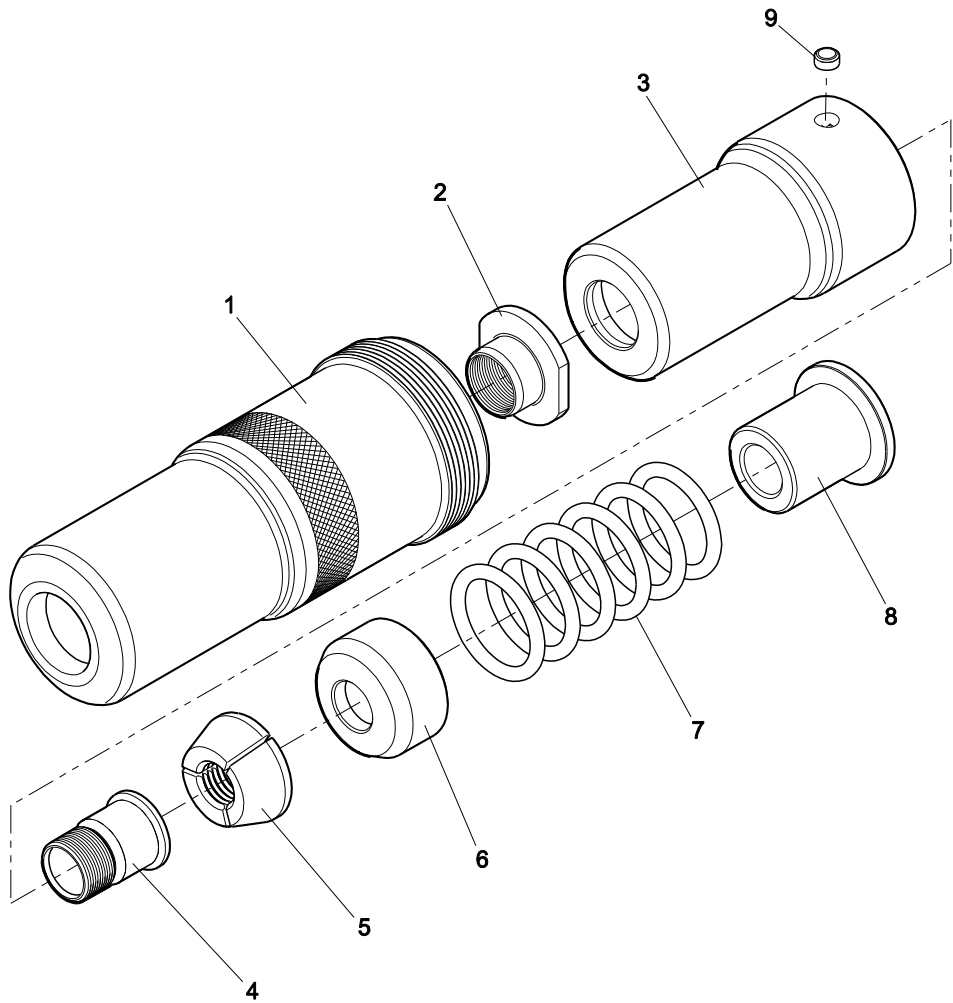
Nose assemblies should be serviced at weekly intervals. You should hold some stock of all internal components of the nose assembly as they will need regular replacement.

- Remove the nose assembly using the reverse procedure to the 'Fitting instructions'.
- Any worn or damaged part should be replaced.
- Clean and check wear on Jaw Set **3**.
- Check that the Follower **4**, Sleeve **5** and 'O' Rings **6** are not distorted.
- Assemble according to fitting instructions.

# 1/2" Infalok® Nose Assembly – 73433-03200 for Avdel® AV™ 15

**IMPORTANT**  
 Be sure the tool power supply is turned off before fitting or removing the nose assembly.

1/2" INFALOK NOSE ASSEMBLY part no 73433-03200			
ITEM	DESCRIPTION	PART No	QTY
1	ANVIL	73432-03201	1
2	EJECTOR	73412-03109	1
3	COLLET	73433-03102	1
4	RELEASE	73412-03110	1
5	JAW SET	73412-03103	1
6	FOLLOWER	73412-03106	1
7	'O' RING	73412-03607	6
8	SLEEVE	73432-03204	1
9	COLLET LOCK	73430-05004	1



# 1/2" Infalok® Nose Assembly – 73433-03200 for Avdel® AV™ 15

---

## Fitting Instructions

---

Item numbers in **bold** refer to nose assembly components in the tables and diagram above.

- Ensure the installation tool piston is in the fully forward position.
- Lightly coat Jaws **5** with Moly Lithium grease.
- On a flat work surface, assemble the Sleeve **8**, 'O' Rings **7**, Follower **6** and Jaws **5** by stacking vertically in that order.
- The Collet **3** will be supplied pre-assembled with the Collar Ejector **2**, jaw Release **4** and with a ball type Collet Lock **9**.
- Place the Collet **3** over the assembly stack, slide to the end of the work surface and with a finger, push the stack fully inside the Collet.
- Holding tool pointing down, screw the assembled Collet **3** onto the Collet Adapter until it is flush with the rear face of the collet adaptor.
- Rotate the Collet **3** on the collet adapter in either direction until the Collet Lock **9** ball slots into the nearest indent on the collet adapter. The Collet Lock should be flush with the exterior of the Collet.
- Slide the Anvil **1** over the Collet **3** and screw into the body of the tool until it is firm.
- There is a locking 'O' ring which will create a resistance to the final few turns of the Anvil **1**. It is imperative that the anvil be hand tightened up against the rear locking face.
- Correct installation of the nose assembly can be gauged by the free movement of the correct size pintail through the assembled jaws in the nose.

## Servicing Instructions

---

Nose assemblies should be serviced at weekly intervals. You should hold some stock of all internal components of the nose assembly as they will need regular replacement.

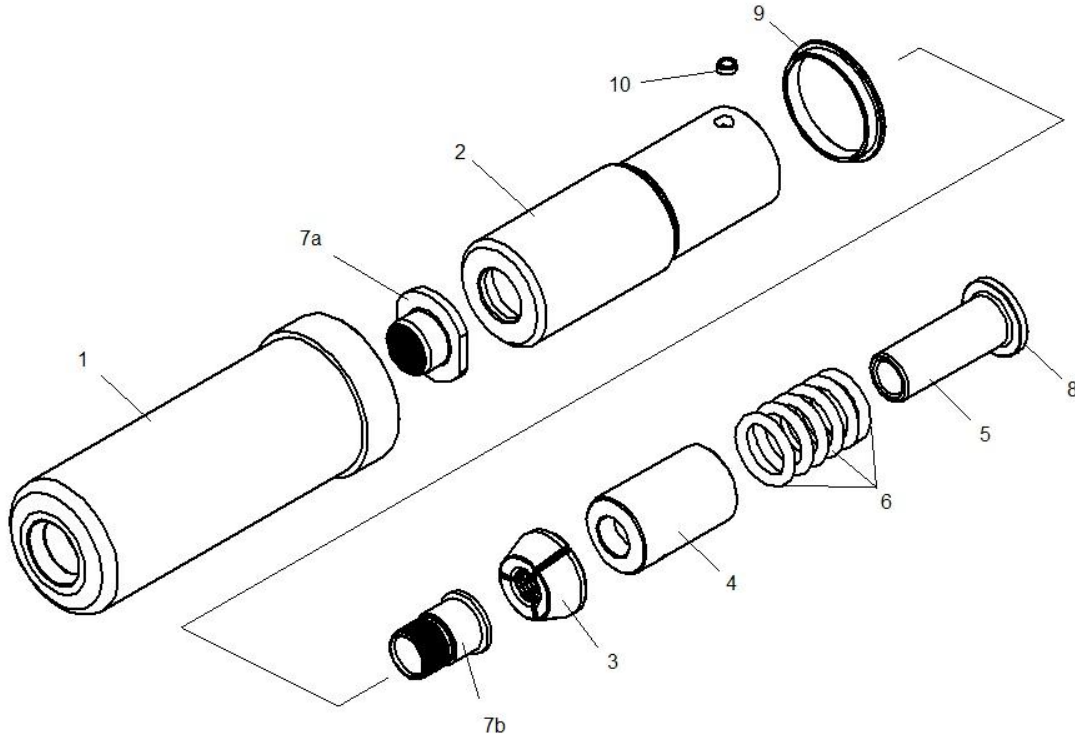
- Remove the nose assembly using the reverse procedure to the 'Fitting Instructions'.
- Any worn or damaged part should be replaced.
- Clean and check wear on Jaws **5**.
- Check that the collar Ejector **2**, Follower **6**, Sleeve **8** and 'O' Rings **7** are not distorted.
- To remove a damaged or worn collar Ejector **2** cut at a point between the flange of the ejector and the end of Collet **3**. The collar Ejector **2** and jaw Release **4** can then be separated and removed from Collet **3**.
- When assembling a new collar Ejector **2** and jaw Release **4** in the Collet **3**, first ensure that the threads are clean, before applying Loctite® 243 and screwing the two parts together within Collet **3**.
- Assemble according to the 'Fitting Instructions'.

# 1/2" Infalok® Nose Assembly – Huck 2620 Tool

**IMPORTANT**  
 Be sure the tool power supply is turned off before fitting or removing the nose assembly.

1/2" INFALOK NOSE ASSEMBLY (HUCK 2620 TOOL) part no 73412-04300			
ITEM	DESCRIPTION	PART No	QTY
1	ANVIL	73412-04301	1
2	COLLET	73412-03702	1
3	JAW SET	73433-03103	1
4	FOLLOWER	73412-04302	1
5	SLEEVE	73412-03704	1
6	'O'RING	73412-03706	6
7a	*COLLAR EJECTOR	73412-03108	1
7b	*JAW RELEASE	73412-03108	1
8	CIRCLIP	07004-00110	1
9	RETAINER	73412-03705	1
10	COLLET LOCK	73430-05004	1

EJECTOR/RELEASE KIT part no 73412-03108		
ITEM	DESCRIPTION	QTY
7a	EJECTOR	1
7b	RELEASE	1





# 1/2" Infalok® Nose Assembly – Huck 2620 Tool

---

## Fitting Instructions

---

Item numbers in **bold** refer to nose assembly components in the table and illustration above.

- Lightly coat Jaw Set **3** with Moly Lithium grease.
- On a flat work surface, assemble Sleeve **5**, 'O' Rings **6**, Follower **4** and Jaw Set **3** by stacking vertically in that order.
- The Collet **2** will be supplied pre-assembled with Collar Ejector **7a** and Jaw Release **7b**.
- Place Collet **2** over the assembled stack, slide to the end of the work surface and with a finger push the stack fully inside Collet **2**.
- Holding the tool pointing down, screw the assembled collet fully onto the tool piston rod.
- Insert Collet Lock **10** into Collet **2**. Unscrew Collet **2** until Collet Lock **10** slots into the nearest groove on piston rod. The Collet Lock **10** should be flush with the exterior of Collet **2**.
- Assemble Anvil **1** and retainer **9** over assembly.

## Servicing Instructions

---

- Nose assemblies should be serviced at weekly intervals. You should hold some stock of all internal components of the nose assembly as they will need regular replacement.
- □ Remove the nose assembly using the reverse procedure to the 'Fitting Instructions'.
- Any worn or damaged part should be replaced.
- Clean and check wear on Jaw Set **3**.
- Check that Collar Ejector **7a**, Collet **2**, Sleeve **5** and 'O' Rings **6** are not distorted.
- To remove a damaged or worn Collar Ejector **7a**, slide the Collar Ejector **7b** out of Collet **2** as far as possible. Cut through Jaw Release **7b** between the flange of Collar Ejector **7a** and the front face of Collet **2**. Invert Collet **2** and push out the remains of Jaw release **7b**.
- When assembling a new Collar Ejector **7a** and Jaw Release **7b** in Collet **2**, first ensure that the threads are clean, before applying Loctite® 243 and screwing the two parts together within Collet **2**.
- Assemble according to the 'Fitting Instructions'.

1/2", 5/8" and 3/4" Infalok® Nose Assemblies - 73412-03100, 73412-03200 and 73412-03300 for Avdel® AV™ 30 and Avlock T30 & T40 Tools

**IMPORTANT**  
**Be sure the power supply is turned off before fitting or removing the nose assembly.**

1/2" INFALOK NOSE ASSEMBLY part no 73412-03100			
ITEM	DESCRIPTION	PART No	QTY
1	ANVIL	73412-03101	1
2	*EJECTOR	73412-03108	1
3	COLLET	73412-03102	1
4	*RELEASE	73412-03108	1
5	JAW SET	73412-03103	1
6	FOLLOWER	73412-03106	1
7	'O' RING	73412-03104	6
8	SLEEVE	73412-03105	1
9	COLLET LOCK	73412-03407	1

EJECTOR/RELEASE KIT part no 73412-03108		
ITEM	DESCRIPTION	QTY
2	EJECTOR	1
4	RELEASE	1

5/8" INFALOK NOSE ASSEMBLY part no 73412-03200			
ITEM	DESCRIPTION	PART No	QTY
1	ANVIL	73412-03201	1
2	*EJECTOR	73412-03208	1
3	COLLET	73412-03202	1
4	*RELEASE	73412-03208	1
5	JAW SET	73412-03203	1
6	FOLLOWER	73412-03206	1
7	'O' RING	73412-03204	6
8	SLEEVE	73412-03205	1
9	COLLET LOCK	73412-03407	1

EJECTOR/RELEASE KIT part no 73412-03208		
ITEM	DESCRIPTION	QTY
2	EJECTOR	1
4	RELEASE	1

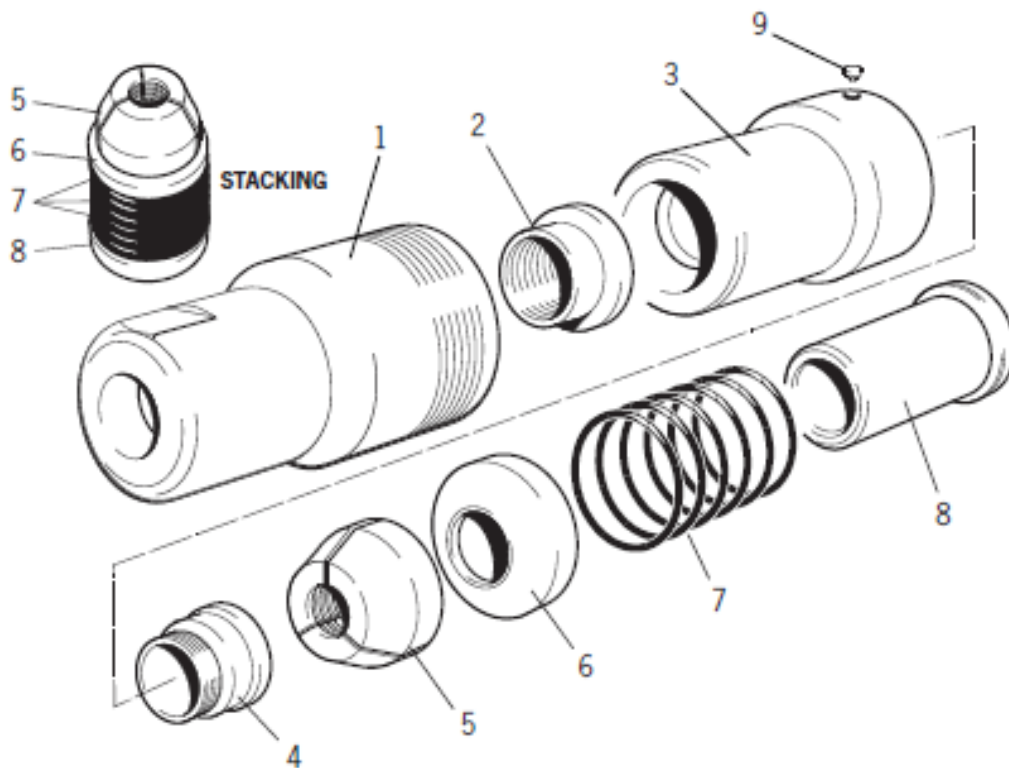
3/4" INFALOK NOSE ASSEMBLY part no 73412-03300			
ITEM	DESCRIPTION	PART No	QTY
1	ANVIL	73412-03301	1
2	*EJECTOR	73412-03308	1
3	COLLET	73412-03302	1
4	*RELEASE	73412-03308	1
5	JAW SET	73412-03303	1
6	FOLLOWER	73412-03306	1
7	'O' RING	73412-03304	7
8	SLEEVE	73412-03305	1
9	COLLET LOCK	73412-03407	1

EJECTOR/RELEASE KIT part no 73412-03308		
ITEM	DESCRIPTION	QTY
2	EJECTOR	1
4	RELEASE	1

\*NOTE: The Ejector 2 and Release 4 are only available as a kit containing both items. part numbers listed are for the complete Ejector/Release Kit.

1/2", 5/8" and 3/4" Infalok® Nose Assemblies - 73412-03100, 73412-03200 and 73412-03300 for Avdel® AV™ 30 and Avlock T30 & T40 Tools

---



---

## Fitting Instructions

---

- Lightly coat Jaw Set **5** with Moly Lithium grease.
- On a flat work surface, assemble Sleeve **8**, 'O' Rings **7**, Follower **6** and Jaw Set **5** by stacking vertically in that order.
- The Collet **3** will be supplied pre-assembled with the collar Ejector **2**, jaw Release **4** and with a ball type Collet Lock **9**.
- Carefully lower Collet **3** over the assembled components, slide to the edge of the work surface and with a finger, push the assembled components fully inside the collet.
- Holding the tool pointing down, screw the assembled collet fully onto the piston rod until it is flush with end of the collet adaptor.
- Rotate Collet **3** on the collet adapter in either direction until Collet Lock **9** slots into the nearest groove on the collet adaptor. The Collet Lock **9** should be flush with the exterior of Collet **3**.
- Slide Anvil **1** over Collet **3** and screw into the anvil adaptor until it is firm.
- There is a locking 'O' Ring which will create a resistance to the final few turns of the nose casing. It is imperative that the nose casing be hand tightened up against the rear locking face.
- Correct installation of the nose assembly can be gauged by the free movement of the correct size pintail through the assembled jaws in the nose.

# 1/2", 5/8" and 3/4" Infalok® Nose Assemblies - 73412-03100, 73412-03200 and 73412-03300 for Avdel® AV™ 30 and Avlock T30 & T40 Tools

---

## Servicing Instructions

---

Nose assemblies should be serviced at weekly intervals. You should hold some stock of all internal components of the nose assembly as they will need regular replacement.

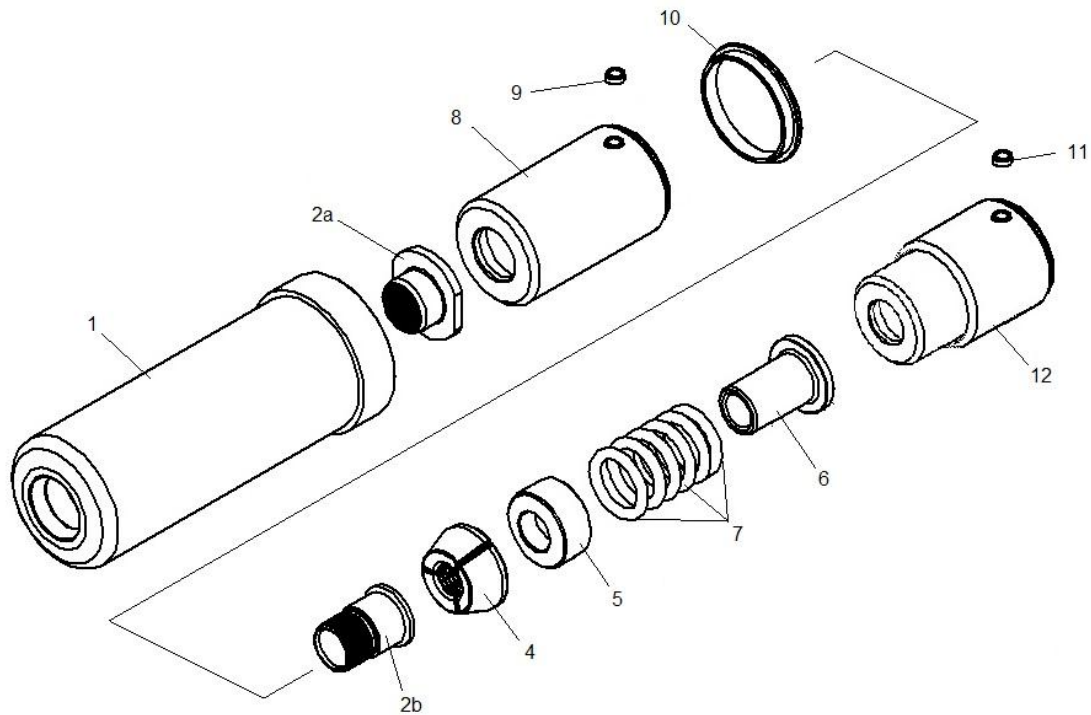
- Remove the nose assembly using the reverse procedure to the 'Fitting Instructions'.
- Any worn or damaged part should be replaced.
- Clean and check wear on Jaw Set **5**.
- Check that the collar Ejector **2**, Follower **6**, Sleeve **8** and 'O' Rings **7** are not distorted.
- To remove a damaged or worn collar Ejector **2** cut at a point between the flange of the ejector and the end of Collet **3**. The collar Ejector **2** and jaw Release **4** can then be separated and removed from Collet **3**.
- When assembling a new collar Ejector **2** and jaw Release **4** in the Collet **3**, first ensure that the threads are clean, before applying Loctite® 243 and screwing the two parts together within Collet **3**.
- Assemble according to the 'Fitting Instructions'.

# 5/8" Infalok® Nose Assembly – Huck 2624 & 2628 Tools

**IMPORTANT**  
**Be sure the power supply is turned off before fitting or removing the nose assembly.**

5/8" INFALOK NOSE ASSEMBLY (HUCK 2624 & 2628 TOOLS) part no 73412-04400			
ITEM	DESCRIPTION	PART No	QTY
1	ANVIL	73412-04401	1
2a	*COLLAR EJECTOR	73412-03208	1
2b	*JAW RELEASE	73412-03208	1
4	JAW SET	73412-03203	1
5	FOLLOWER	73412-03404	1
6	SLEEVE	73412-04402	1
7	'O'RING	07003-00427	6
8	COLLET	73412-03502	1
9	COLLET LOCK	73412-03507	1
10	CIRCLIP	07004-00107	1
11	M5X5 SCREW	07001-00481	1
12	COLLET ADAPTOR	73412-03508	1

EJECTOR/RELEASE KIT part no 73412-03208		
ITEM	DESCRIPTION	QTY
2a	EJECTOR	1
2b	RELEASE	1



### Fitting Instructions

---

Item numbers in **bold** refer to nose assembly components in the table and illustration above.

- Lightly coat Jaws **4** with Moly Lithium grease.
- On a flat work surface, assemble Sleeve **6**, 'O' Rings **7**, Follower **5** and Jaws **4** by stacking vertically in that order.
- The Collet **8** will be supplied pre-assembled with Collar Ejector **2a** and Jaw Release **2b**.
- Place Collet **8** over the assembled stack, slide to the end of the work surface and with a finger push the stack fully inside Collet **8**.
- Screw Collet Adaptor **12** fully into the collet assembly. The shoulder of Collet Adaptor **12** should come into contact with the rear of Collet **8**.
- Insert Collet Lock **9** into Collet **8**. Unscrew Collet Adaptor **12** until Collet Lock **9** slots into the nearest groove. The Collet Lock **9** should be flush with the exterior of Collet **8**.

### Servicing Instructions

---

Nose assemblies should be serviced at weekly intervals. You should hold some stock of all internal components of the nose assembly as they will need regular replacement.

Remove the nose assembly using the reverse procedure to the 'Fitting Instructions'.

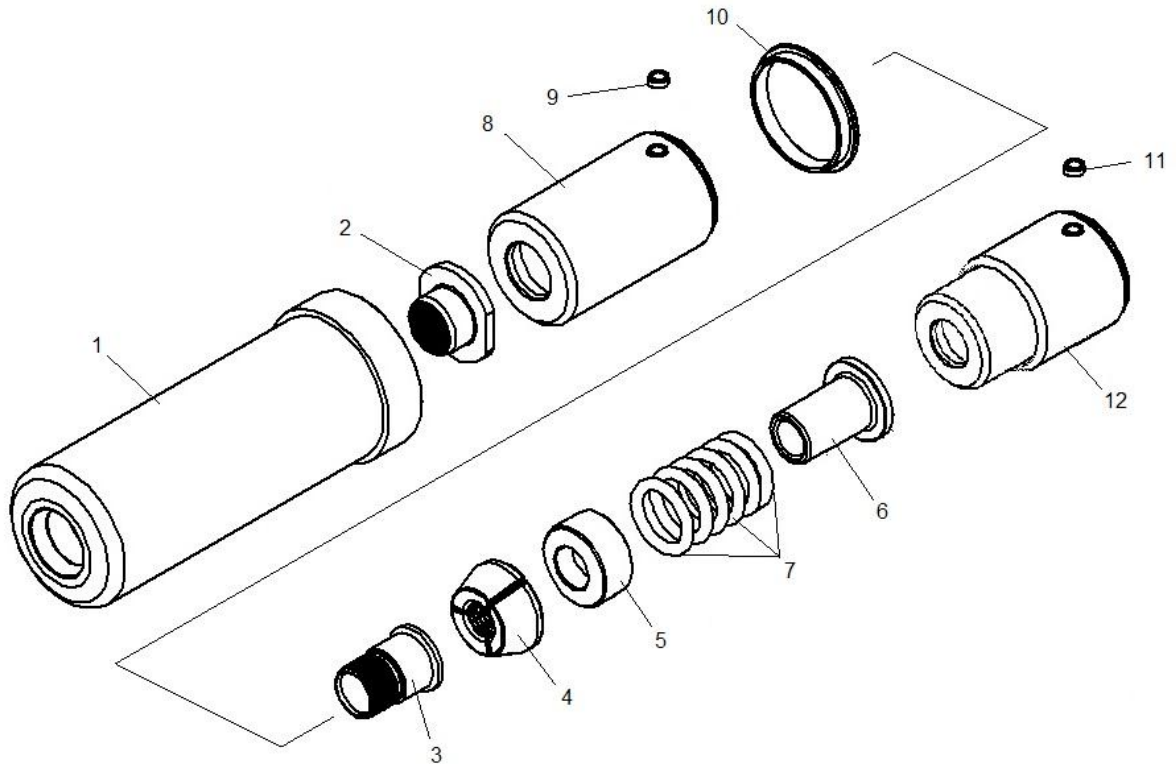
- Any worn or damaged part should be replaced.
- Clean and check wear on Jaws **4**.
- Check that Collar Ejector **2**, Follower **5**, Sleeve **6** and 'O' Rings **7** are not distorted.
- To remove a damaged or worn Collar Ejector **2** cut at a point between the flange of the ejector and the end of Collet **8**. The Collar Ejector **2** and Jaw Release **3** can then be separated and removed from Collet **4**.
- When assembling a new Collar Ejector **2** and Jaw Release **3** in Collet **8**, first ensure that the threads are clean, before applying Loctite® 243 and screwing the two parts together within Collet **8**.
- Assemble according to the 'Fitting Instructions'.

# 3/4" Infalok® Nose Assembly – Huck 2628 Tool

**IMPORTANT**  
Be sure the power supply is turned off before fitting or removing the nose assembly.

3/4" INFALOK NOSE ASSEMBLY (HUCK 2628 TOOL) part no 73412-04500			
ITEM	DESCRIPTION	PART No	QTY
1	ANVIL	73412-04501	1
2	*COLLAR EJECTOR	73412-03308	1
3	*JAW RELEASE	73412-03308	1
4	JAW SET	73412-03303	1
5	FOLLOWER	73412-04502	1
6	SLEEVE	73412-04503	1
7	'O'RING	07003-00427	6
8	COLLET	73412-03502	1
9	COLLET LOCK	73412-03507	1
10	CIRCLIP	07004-00107	1
11	M5X5 SCREW	07001-00481	1
12	COLLET ADAPTOR	73412-03508	1

EJECTOR/RELEASE KIT part no 73412-03308		
ITEM	DESCRIPTION	QTY
2	EJECTOR	1
3	RELEASE	1



## 3/4" Infalok® Nose Assembly – Huck 2628 Tool

---

### Fitting Instructions

---

Item numbers in **bold** refer to nose assembly components in the table and illustration above.

- Lightly coat Jaw Set **4** with Moly Lithium grease.
- On a flat work surface, assemble Sleeve **6**, 'O' Rings **7**, Follower **5** and Jaw Set **4** by stacking vertically in that order.
- The Collet **8** will be supplied pre-assembled with Collar Ejector **2** and Jaw Release **3**.
- Place Collet **8** over the assembled stack, slide to the end of the work surface and with a finger push the stack fully inside Collet **8**.
- Screw Collet Adaptor **12** fully into the collet assembly. The shoulder of Collet Adaptor **12** should come into contact with the rear of Collet **8**.
- Insert Collet Lock **9** into Collet **8**. Unscrew Collet Adaptor **12** until Collet Lock **9** slots into the nearest groove. The Collet Lock **9** should be flush with the exterior of Collet **8**.

### Servicing Instructions

---

Nose assemblies should be serviced at weekly intervals. You should hold some stock of all internal components of the nose assembly as they will need regular replacement.

Remove the nose assembly using the reverse procedure to the 'Fitting Instructions'.

- Any worn or damaged part should be replaced.
- Clean and check wear on Jaw Set **4**.
- Check that Collar Ejector **2**, Follower **5**, Sleeve **6** and 'O' Rings **7** are not distorted.
- To remove a damaged or worn Collar Ejector **2** cut at a point between the flange of the ejector and the end of Collet **8**. The Collar Ejector **2** and Jaw Release **3** can then be separated and removed from Collet **8**.
- When assembling a new Collar Ejector **2** and Jaw Release **3** in Collet **8**, first ensure that the threads are clean, before applying Loctite® 243 and screwing the two parts together within Collet **8**.
- Assemble according to the 'Fitting Instructions'.



7/8", 1" and 1 1/8" Infalok® Nose Assemblies - 73410-03100, 73410-03200 and 73410-03300 for Avdel® AV™ 50 and Avlock T51 Tools

**IMPORTANT**  
**Be sure the power supply is turned off before fitting or removing the nose assembly.**

7/8" INFALOK NOSE ASSEMBLY part no 73410-03200			
ITEM	DESCRIPTION	PART No	QTY
1	ANVIL	73410-03201	1
2	*EJECTOR	73410-03208	1
3	COLLET	73410-03202	1
4	*RELEASE	73410-03208	1
5	JAW SET	73410-03203	1
6	FOLLOWER	73410-03206	1
7	CUSHION	73410-03204	1
8	END CAP	73410-03205	1
9	COLLET LOCK	73412-03407	1

EJECTOR/RELEASE KIT part no 73410-03208		
ITEM	DESCRIPTION	QTY
2	EJECTOR	1
4	RELEASE	1

1" INFALOK NOSE ASSEMBLY part no 73410-03100			
ITEM	DESCRIPTION	PART No	QTY
1	ANVIL	73410-03109	1
2	*EJECTOR	73410-03108	1
3	COLLET	73410-03102	1
4	*RELEASE	73410-03108	1
5	JAW SET	73410-03103	1
6	FOLLOWER	73410-03106	1
7	CUSHION	73410-03104	1
8	END CAP	73410-03105	1
9	COLLET LOCK	73412-03407	1

EJECTOR/RELEASE KIT part no 73410-03108		
ITEM	DESCRIPTION	QTY
2	EJECTOR	1
4	RELEASE	1

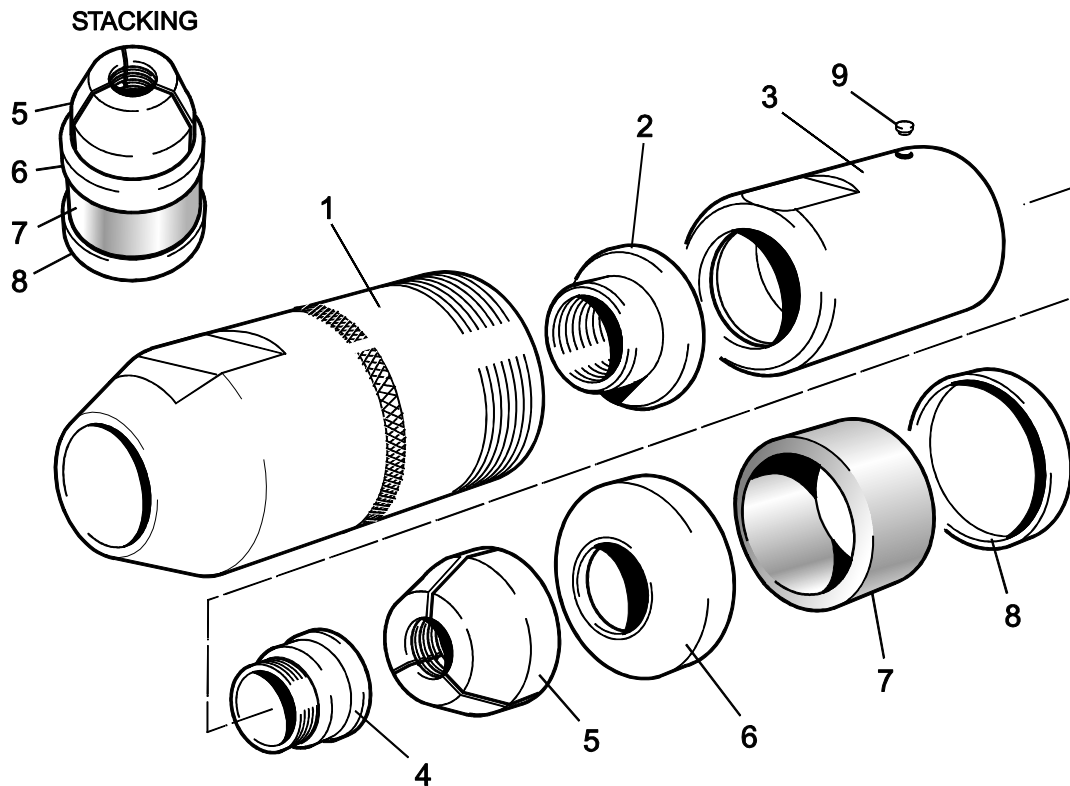
1 1/8" INFALOK NOSE ASSEMBLY part no 73410-03300			
ITEM	DESCRIPTION	PART No	QTY
1	ANVIL	73410-03301	1
2	*EJECTOR	73410-03308	1
3	COLLET	73410-03102	1
4	*RELEASE	73410-03308	1
5	JAW SET	73410-03103	1
6	FOLLOWER	73410-03106	1
7	CUSHION	73410-03104	1
8	END CAP	73410-03105	1
9	COLLET LOCK	73412-03407	1

EJECTOR/RELEASE KIT part no 73410-03308		
ITEM	DESCRIPTION	QTY
2	EJECTOR	1
4	RELEASE	1

**\*NOTE:** The Ejector **2** and Release **4** are only available as a kit containing both items. part numbers listed are for the complete Ejector/Release Kit.

7/8", 1" and 1 1/8" Infalok® Nose Assemblies - 73410-03100, 73410-03200 and 73410-03300 for Avdel® AV™ 50 and Avlock T51 Tools

---



---

## Fitting Instructions

---

Item numbers in **bold** refer to nose assembly components in the table and illustration on pages 7 and 8.

- Lightly coat Jaw Set **5** with Moly Lithium grease.
- On a flat work surface, assemble End Cap **8**, Cushion **7**, Follower **6** and Jaw Set **5** by stacking vertically in that order.
- The Collet **3** will be supplied pre-assembled with the collar Ejector **2** and jaw Release **4**.
- Carefully lower Collet **3** over the assembled components, slide to the edge of the work surface and with a finger, push the assembled components fully inside the collet.
- Holding the tool pointing down, screw the assembled collet fully onto the piston rod until it is flush with end of the collet adaptor.
- Insert Collet Lock **9** into Collet **3**. Rotate Collet **3** on the piston rod in either direction until Collet Lock **9** slots into the nearest groove on the collet adaptor. The Collet Lock **9** should be flush with the exterior of Collet **3**.
- Slide Anvil **1** over Collet **3** and screw into the anvil adaptor until it is firm.
- There is a locking 'O' Ring which will create a resistance to the final few turns of the Anvil **1**. It is imperative that the Anvil be hand tightened up against the rear locking face.
- Correct installation of the nose assembly can be gauged by the free movement of the correct size pintail through the assembled jaws in the nose.

## 7/8", 1" and 1 1/8" Infalok® Nose Assemblies - 73410-03100, 73410-03200 and 73410-03300 for Avdel® AV™ 50 and Avlock T51 Tools

---

### Servicing Instructions

---

Nose assemblies should be serviced at weekly intervals. You should hold some stock of all internal components of the nose assembly as they will need regular replacement.

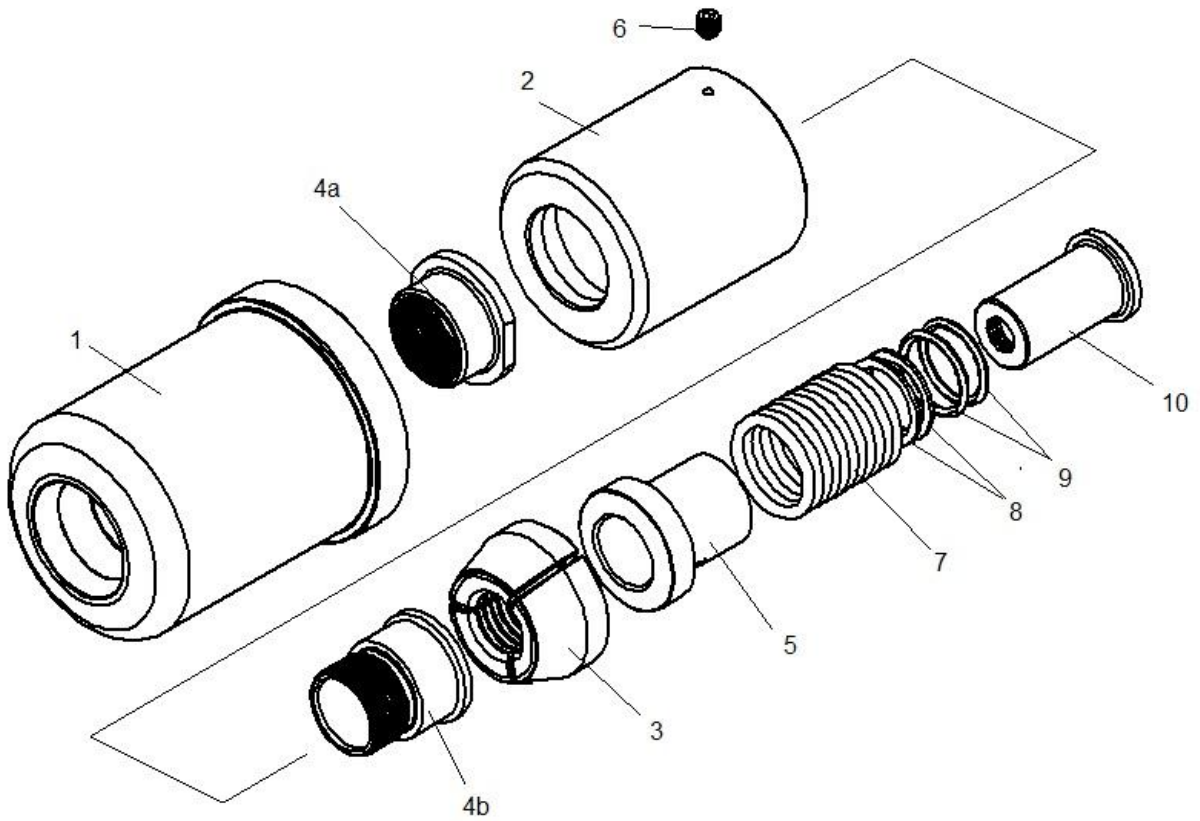
- Remove the nose assembly using the reverse procedure to the 'Fitting Instructions'.
- Any worn or damaged part should be replaced.
- Clean and check wear on Jaw Set **5**.
- Check that collar Ejector **2**, Follower **6**, End Cap **8** and Cushion **7** are not distorted.
- To remove a damaged or worn collar Ejector **2** cut at a point between the flange of the ejector and the end of Collet **3**. The collar Ejector **2** and jaw Release **4** can then be separated and removed from Collet **3**.
- When assembling a new collar Ejector **2** and jaw Release **4** in Collet **3**, first ensure that the threads are clean, before applying Loctite® 243 and screwing the two parts together within Collet **3**.
- Assemble according to the 'Fitting Instructions'.

# 7/8" Infalok® Nose Assembly – Huck 506 Tool

**IMPORTANT**  
 Be sure the power supply is turned off before fitting or removing the nose assembly.

7/8" INFALOK NOSE ASSEMBLY (HUCK 506 TOOL) part no 73455-03100			
ITEM	DESCRIPTION	PART No	QTY
1	ANVIL	73455-03101	1
2	COLLET	73455-03102	1
3	JAW SET	73410-03203	1
4a	*COLLAR EJECTOR	73410-03208	1
4b	*JAW RELEASE	73410-03208	1
5	FOLLOWER	73455-03103	1
6	LOCKING SCREW	73454-03105	1
7	SPRING	73455-03105	1
8	WASHER	73455-03106	1
9	'O'RING	73455-03107	2
10	SPRING GUIDE	73455-03104	1

EJECTOR/RELEASE KIT part no 73410-03208		
ITEM	DESCRIPTION	QTY
4a	EJECTOR	1
4b	RELEASE	1



# 7/8" Infalok® Nose Assembly – Huck 506 Tool

---

## Fitting Instructions

---

Item numbers in **bold** refer to nose assembly components in the table and illustration above.

- Lightly coat Jaw Set **3** with Moly Lithium grease.
- Assemble Spring Guide **10**, 'O' Rings **9**, Washer **8** and Spring **7**.
- The Collet **2** will be supplied pre-assembled with Collar Ejector **4a** and Jaw Release **4b**.
- Place Collet **2** over the assembled stack, slide to the end of the work surface and with a finger push the stack fully inside Collet **2**.
- Screw Collet **2** and assembled stack fully onto the Tool Collet Adaptor (fitted to tool).
- Insert Locking Screw **6** into Collet **2**. Unscrew Collet **2** until Locking Screw **6** can be tightened into the nearest groove in the Tool Collet adaptor. When assembled the Locking Screw **6** should be flush with the exterior of Collet **2**.

## Servicing Instructions

---

Nose assemblies should be serviced at weekly intervals. You should hold some stock of all internal components of the nose assembly as they will need regular replacement.

Remove the nose assembly using the reverse procedure to the 'Fitting Instructions'.

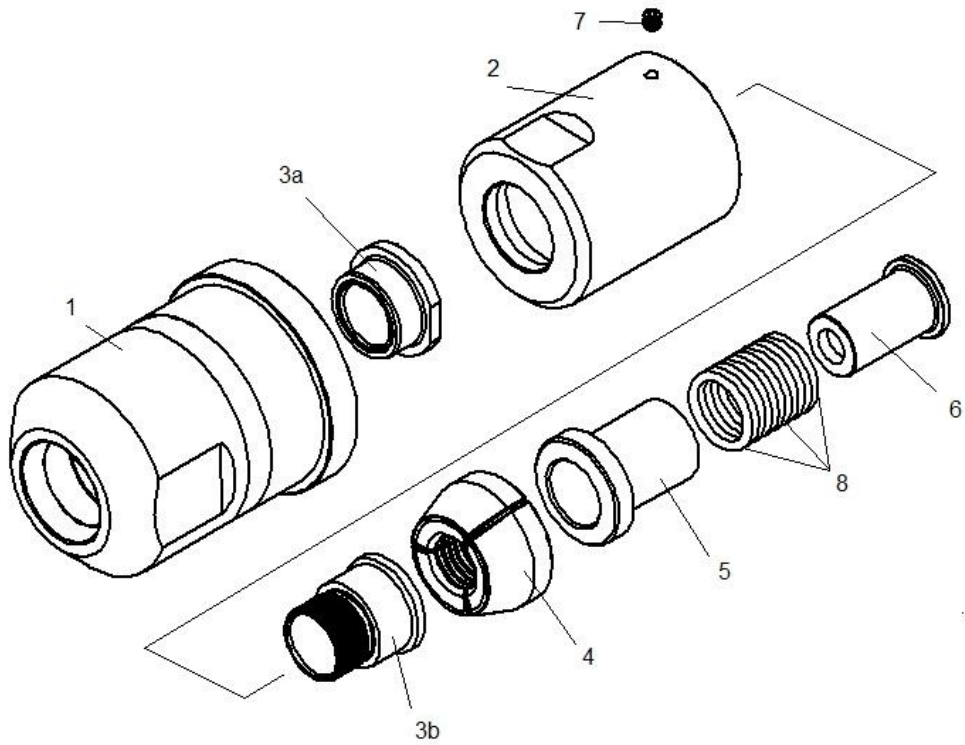
- Any worn or damaged part should be replaced.
- Clean and check wear on Jaw Set **3**.
- Check that Collar Ejector **4a**, Follower **5**, Spring Guide **10** and 'O' Rings **9** are not distorted.
- To remove a damaged or worn Collar Ejector **4a** cut at a point between the flange of the ejector and the end of Collet **2**. The Collar Ejector **4a** and Jaw Release **4b** can then be separated and removed from Collet **2**.
- When assembling a new Collar Ejector **4a** and Jaw Release **4b** in Collet **2**, first ensure that the threads are clean, before applying Loctite® 243 and screwing the two parts together within Collet **2**.
- Assemble according to the 'Fitting Instructions'.

# 1" Infalok® Nose Assembly – Huck 507 Tool

**IMPORTANT**  
 Be sure the power supply is turned off before fitting or removing the nose assembly.

1" INFALOK NOSE ASSEMBLY (HUCK 507 TOOL) part no 73454-03100			
ITEM	DESCRIPTION	PART No	QTY
1	ANVIL	73451-03101	1
2	COLLET	73454-03102	1
3a	*COLLAR EJECTOR	73410-03108	1
3b	*JAW RELEASE	73410-03108	1
4	JAW SET	73410-03103	1
5	FOLLOWER	73454-03103	1
6	SPRING GUIDE	73454-03104	1
7	M6 SCREW	73454-03105	1
8	'O'RING	07003-00013	11

EJECTOR/RELEASE KIT part no 73410-03108		
ITEM	DESCRIPTION	QTY
3a	EJECTOR	1
3b	RELEASE	1



# 1" Infalok® Nose Assembly – Huck 507 Tool

---

## Fitting Instructions

---

Item numbers in **bold** refer to nose assembly components in the table and illustration above.

- Lightly coat Jaw Set **4** with Moly Lithium grease.
- Assemble Spring Guide **6**, 'O' Rings **8**, Follower **5** and Jaw Set **4** in stack.
- The Collet **2** will be supplied pre-assembled with Collar Ejector **3a** and Jaw Release **3b**.
- Place Collet **2** over the assembled stack, push the stack fully inside Collet **2**.
- Screw Collet **2** and assembled stack fully onto Tool Piston Collet Adaptor (fitted to tool).
- Insert Screw **7** into Collet **2**. Unscrew Collet Adaptor **2** until Screw **7** can be tightened into nearest groove in the Tool Collet Adaptor. The Screw **7** should be flush with the exterior of Collet **2**.

## Servicing Instructions

---

Nose assemblies should be serviced at weekly intervals. You should hold some stock of all internal components of the nose assembly as they will need regular replacement.

Remove the nose assembly using the reverse procedure to the 'Fitting Instructions'.

- Any worn or damaged part should be replaced.
- Clean and check wear on Jaw Set **4**.
- Check that Collar Ejector **3a**, Follower **5**, Sleeve **6** and 'O' Rings **8** are not distorted.
- To remove a damaged or worn Collar Ejector **3a** cut at a point between the flange of the ejector and the end of Collet **2**. The Collar Ejector **3a** and Jaw Release **3b** can then be separated and removed from Collet **2**.
- When assembling a new Collar Ejector **3a** and Jaw Release **3b** in Collet **2**, first ensure that the threads are clean, before applying Loctite® 243 and screwing the two parts together within Collet **2**.
- Assemble according to the 'Fitting Instructions'.

# Holding your world together<sup>®</sup>

---

Find your closest STANLEY Engineered Fastening location on [www.StanleyEngineeredFastening.com/contact](http://www.StanleyEngineeredFastening.com/contact)



For an authorized distributor nearby please check [www.StanleyEngineeredFastening.com/econtact/distributors](http://www.StanleyEngineeredFastening.com/econtact/distributors)

Manual Number	Issue	C/N
07900-00919	C	14/071

**STANLEY**  
Engineered Fastening

[www.StanleyEngineeredFastening.com](http://www.StanleyEngineeredFastening.com)

© 2013 Stanley Black & Decker, Inc., Rev. 01.2014

Avbolt<sup>®</sup>, Avdel<sup>®</sup>, Avdelok<sup>®</sup>, Avex<sup>®</sup>, Avinox<sup>®</sup>, Avseal<sup>®</sup>, Avtainer<sup>®</sup>, Hemlok<sup>®</sup>, Maxlok<sup>®</sup> and Monobolt<sup>®</sup> are trademarks of Avdel UK Limited. The names and logos of other companies mentioned herein may be trademarks of their respective owners. Data shown is subject to change without prior notice as a result of continuous product development and improvement policy. Your local Avdel representative is at your disposal should you need to confirm latest information.

Avdel UK Limited  
Pacific House, 2 Swiftfields  
Welwyn Garden City, Hertfordshire AL7 1LY  
Tel. +44 (0)1707 292-000 · Fax -199  
[enquiries2@sbdinc.com](mailto:enquiries2@sbdinc.com)